

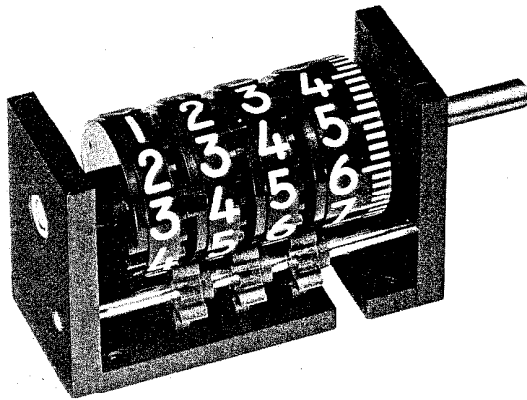
# Mechanical Totalizing Counters

# VEEDER-ROOT



Digital Systems Division

## VEEDERLINE\* 1000 COUNTER SERIES 1998, 1999



### DESCRIPTION

Lightweight, long life totalizers. Manufactured to rigid specifications for limited space installations. Rugged construction, corrosion resistant. Low inertia wheels and pinions. Stainless steel shafts. One piece aluminum frame. Long life, high speed. Low torque, compact, and flexible. Special wheels optional for extra quiet operation.

### APPLICATIONS

Business machines, data processing equipment, integrators, digital and analog computers. Laboratory equipment, gages, measuring and metering instruments. Machine controls, process totalizing, communications and photographic equipment. Registers, timing devices, and vending machines.

### MODELS

**Series 1998**—Direct drive, adds ten counts for each drive shaft revolution in specified rotation. Subtracts for opposite rotation. Right hand wheel integral with shaft. Nonreset. Porous bronze bearings. Nonstock, make item.

**Series 1999**—Geneva pinion transfer in first position. Nonstock, make item.

### SPECIFICATIONS

**Speed:** 1500 rpm continuous, 2000 rpm intermittent

**Torque:** Max static: 0.2 to 0.5 oz-in. depending on number of wheels

**Number of Figures:** 3 to 7 with Type A right wheel; 3 to 6 with Types B to F right wheels

**Size of Figures:** 0.250 in. high by 0.167 in. wide with 0.032 in. line stroke

**Color of Figures:** White on black. Specials optional

**Mounting:** Base. Specials optional

**Lubrication:** Not required

### Character Configurations Right wheel

Type A: 0 to 9

Type B: 0 to 9 with 50 graduations (10 long and 40 short)

Type C: 0 to 9 with 100 graduations (10 long and 90 short)

Type D: 00 to 90 by 10's

Type E: 00 to 90 by 10's with 50 graduations (10 long and 40 short)

Type F: 00 to 90 by 10's with 100 graduations (10 long and 90 short)

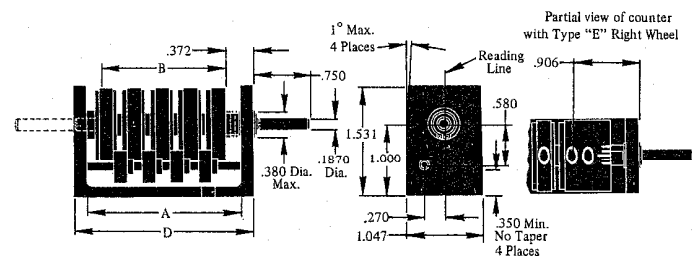
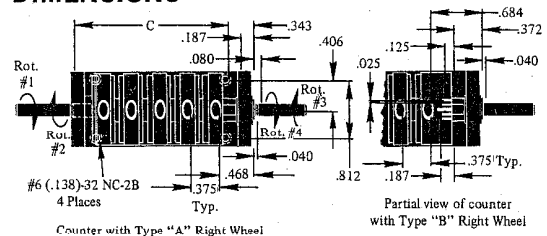
**Construction:** Frame: aluminum. Shaft, washers: stainless steel. Right wheel: nylon, others acetal resin. Pinions: acetal resin. Bearings: porous bronze

**Net Weight:** 5 oz

### OPTIONS

Geneva drive. Special shaft lengths, double extensions. Special wheel colors and configurations. Special reading lines, cursor lines, stationary zeros. Special wheels for extra low noise requirements.

### DIMENSIONS



Right Wheel	No. of Wheels	A	B	C	D
Type A	3	1.312	.953	1.000	1.687
	4	1.687	1.328	1.375	2.062
	5	2.062	1.703	1.750	2.437
	6	2.453	2.078	1.750	2.828
	7	2.828	2.453	2.250	3.203
Type B, C, D	3	1.687	1.168	1.375	2.062
	4	2.062	1.543	1.750	2.437
	5	2.453	1.918	1.750	2.828
	6	2.828	2.293	2.250	3.203
Type E, F	3	1.687	1.390	1.375	2.062
	4	2.062	1.765	1.750	2.437
	5	2.453	2.140	1.750	2.828
	6	2.828	2.515	2.250	3.203

\*Trademark of Veeder-Root

Information for guidance only. For current specifications and dimensions, or possible modifications, let our engineers assist you.

# Veeder-Root Sales Offices

## United States and Canada

### California

- 1049 Grand Central Avenue\*  
Glendale 91201  
Tel: (213) 245-8421  
(213) 241-8026  
Telex 67-4392  
1499 Bayshore Blvd.  
Burlingame 94010  
Tel: (415) 697-6830

### Connecticut

- 70 Sargeant Street\*  
Hartford 06102  
Tel: (203) 527-7201  
Telex 9-9219

### Georgia

47 Westwood Circle  
Rome 30161  
Tel: (404) 235-0756

### Illinois

- 455 State Street  
Des Plaines 60016  
Tel: (312) 824-0188  
Telex 72-6327

### Maryland

Baltimore  
Tel: (301) 296-2177

### Michigan

19818 Mack Avenue  
Detroit 48236  
Tel: (313) 886-4485

### Minnesota

2401 West 66th Street  
Minneapolis 55423  
Tel: (612) 866-4811  
(612) 866-5805  
Telex 029-690

### New Jersey

- 1250 East Ridgewood Ave.  
Ridgewood 07450  
Tel: (201) 445-2401  
Telex 13-3495

### New York

- 1250 East Ridgewood Ave.  
Ridgewood, N.J. 07450  
Tel: (201) 445-2401  
Telex 13-3495  
3100 Monroe Ave.  
Rochester 14618  
Tel: (716) 244-0500

### North Carolina\*\*

2100 W. Broad, Rt. 87  
Elizabethtown 28337  
Tel: (919) 862-2511  
Charlotte  
Tel: (704) 364-3653

### Ohio

5725 Dragon Way  
Cincinnati 45227  
Tel: (513) 271-6200

12417 Cedar Road  
Cleveland 44106  
Tel: (216) 462-2634

### Pennsylvania

P.O. Box 560  
Willow Grove 19090  
Tel: (215) 887-0708

### South Carolina

- P.O. Box 1845, 29602\*  
I-385 at Roper Mountain Rd.  
Greenville 29607  
Tel: (803) 288-2133  
Telex 57-0422

### Texas

4223 Richmond Ave.  
Suite 218, Tracy Bldg.  
Houston 77027  
Tel: (713) 623-4806  
Dallas  
Tel: (214) 252-3360

### Canada

- 26 Fieldway Road  
Toronto M8Z 3L2  
Tel: (416) 239-3094  
Telex 02-2783  
1495 McDonald Street  
Suite 2  
St. Laurent 379  
Tel: (514) 747-1213

- Regional Office
- \* Service and Repair
- \*\* Manufacturing Only

The Total Capability Company

VEEDER-ROOT

Digital Systems Division

Hartford, Conn. 06102 - (203) 527-7201 A VEEDER INDUSTRIES COMPANY



VEEDER-ROOT WORLD WIDE: ARGENTINA: Buenos Aires • AUSTRALIA: Melbourne • BRAZIL: Sao Paulo  
CANADA: Toronto • ENGLAND: Croydon, Surrey • SCOTLAND: Dundee • WEST GERMANY: Neuhausen/Filder