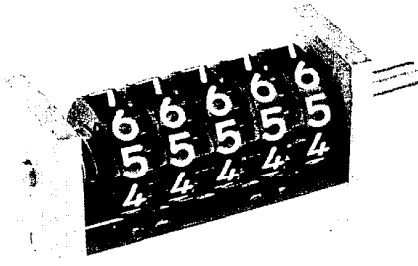




# VEEDER-ROOT

# DIGITAL PRODUCTS

## 1996, 1997, 7254 VEEDERLINE\* 740 & VARICOUNTER\*



### DESCRIPTION

Lightweight, long life totalizers. Manufactured to rigid specifications for limited space installations. Rugged construction, corrosion resistant. Low inertia wheels and pinions. Stainless steel shafts. One piece aluminum frame. Long life, high speed. Low torque, compact, quiet, and flexible.

### APPLICATIONS

Business machines, data processing equipment, integrators, digital and analog computers. Laboratory equipment, gauges, measuring and metering instruments. Machine controls, process totalizing, communications and photographic equipment. Registers, timing devices, and vending machines.

### MODELS

**Series 1996, 1997, 7254** — Direct drive, adds ten or 100 counts for each drive shaft revolution in specified rotation. Subtracts for opposite rotation. Nonreset. Series 1997 has Geneva transfer pinion between first and second wheels. Series 1996 and 1997 Veederline 740 have porous bronze bearings and instrument black finish. Series 7254 has natural aluminum finish. All are nonstock, make items.

### SPECIFICATIONS

**Speed:** Series 1996: 1500 rpm continuous, 2500 rpm intermittent. Series 1997: 2000 rpm continuous, 3500 rpm intermittent. Series 7254: 1000 rpm continuous, 1500 rpm intermittent.

**Torque:** Maximum static: 0.1 to 0.6 oz-in. (0.71 to 4.24 N·m) depending on number of wheels and model.

**Number of Figures:** 2 to 7.

**Size of Figures:** 0.187 in. (4.7 mm) high by 0.140 in. (3.6 mm) wide with 0.035 in. (0.9 mm) stroke. Line stroke 0.025 in. (0.6 mm) available.

**Color of Figures:** White on black. Specials optional.

**Character Configuration:** 0 to 9 or 00 to 90, with or without 50 graduations.

**Lubrication:** Series 1996, 1997: not required. Series 7254: one drop of light machine oil outboard of shaft bearing after prolonged use.

**Mounting:** Base. Specials optional.

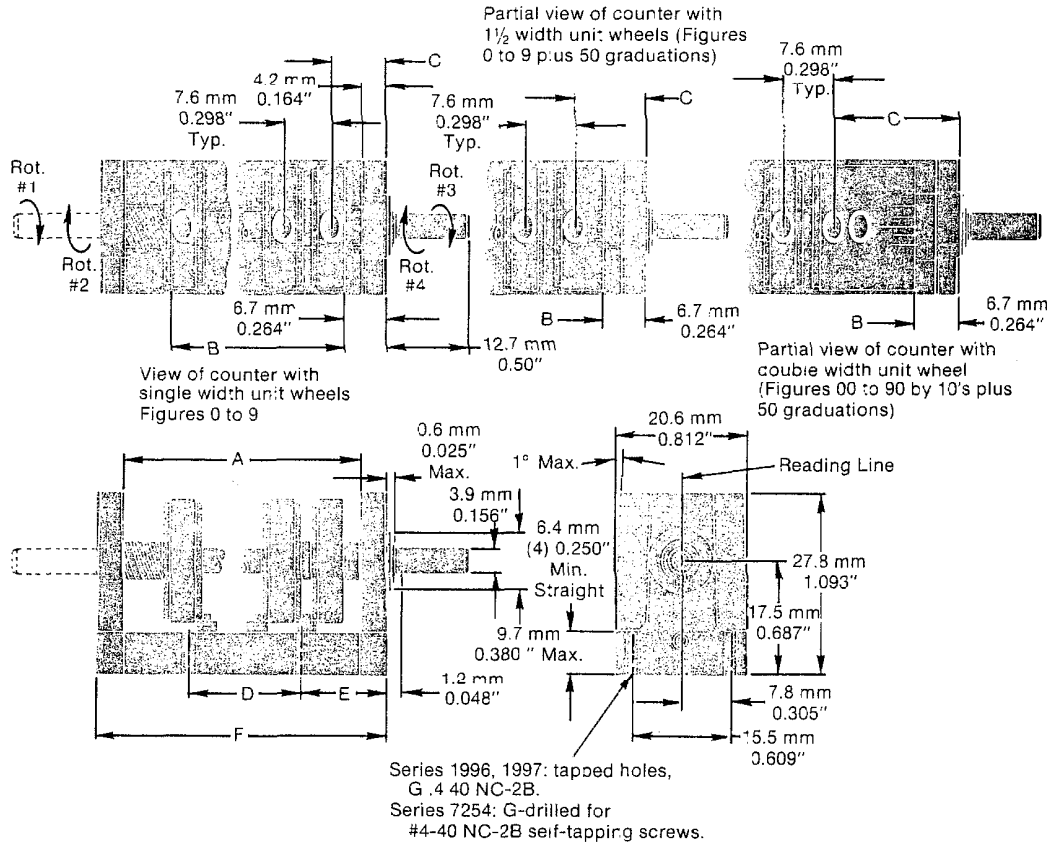
**Construction:** Frame: aluminum. Shafts: stainless steel. Wheels, pinions: acetal resin. Bearings: porous bronze, Series 1996 and 1997 only.

**Net Weight:** 1 oz. to 1.75 oz. (28.35 g. to 49.61 g.).

### OPTIONS

Dual or tandem models. Special reading lines, cursor lines, stationary zeros. Double shaft extensions, special lengths. Special wheel configurations and mounting holes.

# DIMENSIONS



COUNTER WITH SINGLE WIDTH UNIT WHEEL							
No. of Wheels	A	B	C	D	E	F	G
2	19.8 mm 0.781"	1.6 mm 0.458"	8.7 mm 0.342"	0 mm 0"	4.1 mm 0.555"	28.2 mm 1.109"	50.8 mm 2"
3	28.2 mm 1.109"	9.2 mm 0.756"	8.7 mm 0.342"	0 mm 0"	8.3 mm 0.719"	36.5 mm 1.437"	50.8 mm 2"
4	36.1 mm 1.422"	26.8 mm 1.054"	8.7 mm 0.342"	0 mm 0"	22.2 mm 0.875"	44.5 mm 1.752"	50.8 mm 2"
5	43.6 mm 1.718"	34.3 mm 1.352"	8.7 mm 0.342"	24.6 mm 0.968"	13.7 mm 0.539"	52.0 mm 2.046"	101.6 mm 4"
6	51.2 mm 2.015"	41.9 mm 1.65"	8.7 mm 0.342"	24.6 mm 0.968"	17.5 mm 0.688"	59.5 mm 2.343"	101.6 mm 4"
7	58.7 mm 2.312"	49.5 mm 1.948"	8.7 mm 0.342"	24.6 mm 0.968"	21.2 mm 0.836"	67.1 mm 2.640"	101.6 mm 4"

COUNTER WITH 1½ WIDTH UNIT WHEEL							
No. of Wheels	A	B	C	D	E	F	G
2	19.8 mm 0.781"	14.0 mm 0.552"	11.1 mm 0.436"	0 mm 0"	14.1 mm 0.555"	28.2 mm 1.109"	50.8 mm 2"
3	28.2 mm 1.109"	21.6 mm 0.850"	11.1 mm 0.436"	0 mm 0"	8.3 mm 0.719"	36.5 mm 1.437"	50.8 mm 2"
4	36.1 mm 1.422"	29.2 mm 1.148"	11.1 mm 0.436"	0 mm 0"	22.2 mm 0.875"	44.5 mm 1.752"	50.8 mm 2"
5	43.6 mm 1.718"	35.7 mm 1.446"	11.1 mm 0.436"	24.6 mm 0.968"	13.7 mm 0.539"	52.0 mm 2.046"	101.6 mm 4"
6	51.2 mm 2.015"	44.3 mm 1.744"	11.1 mm 0.436"	24.6 mm 0.968"	17.5 mm 0.688"	59.5 mm 2.343"	101.6 mm 4"
7	58.7 mm 2.312"	51.9 mm 2.042"	11.1 mm 0.436"	24.6 mm 0.968"	21.2 mm 0.836"	67.1 mm 2.640"	101.6 mm 4"

COUNTER WITH DOUBLE WIDTH UNIT WHEEL							
No. of Wheels	A	B	C	D	E	F	G
2	28.2 mm 1.109"	22.6 mm 0.889"	9.6 mm 0.772"	0 mm 0"	18.3 mm 0.729"	36.5 mm 1.437"	50.8 mm 2"
3	36.1 mm 1.422"	30.1 mm 1.186"	19.6 mm 0.772"	0 mm 0"	22.2 mm 0.875"	44.5 mm 1.750"	50.8 mm 2"
4	43.6 mm 1.718"	37.7 mm 1.484"	19.6 mm 0.772"	24.6 mm 0.968"	13.7 mm 0.539"	52.0 mm 2.046"	101.6 mm 4"
5	51.2 mm 2.015"	45.3 mm 1.782"	19.6 mm 0.772"	24.6 mm 0.968"	17.5 mm 0.688"	59.5 mm 2.343"	101.6 mm 4"
6	58.7 mm 2.312"	52.8 mm 2.080"	19.6 mm 0.772"	24.6 mm 0.968"	21.2 mm 0.836"	67.1 mm 2.640"	101.6 mm 4"
7	79.0 mm 3.109"	60.4 mm 2.378"	19.6 mm 0.772"	39.7 mm 1.562"	23.8 mm 0.938"	87.3 mm 3.437"	101.6 mm 4"

Information for guidance only. For current specifications and dimensions, or possible modifications, let our engineers assist you.

**VEEDER-ROOT**  
Digital Products



125 Powder Forest Drive, Post Office Box 2003, Simsbury, CT 06070-2003 TEL: (203) 651-2700, FAX: (203) 651-2750

AUSTRALIA: Cheltenham, Victoria • BRAZIL: Sao Paulo • CANADA: Toronto/Montreal/Vancouver  
FRANCE: Rungis • SCOTLAND: Dundee • WEST GERMANY: Neuhausen/Flider