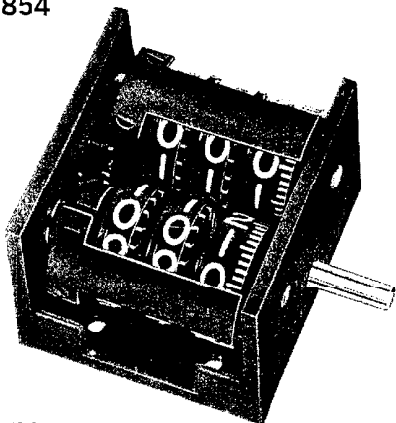


VEEDERLINE* 740 DUAL COUNTER SERIES 1854



DESCRIPTION

Double bank counting with a choice of add and subtract register combinations. Two standard right wheel configurations, and three frame sizes. Long life, lightweight. Aluminum frame, stainless steel shafts. Low inertia precision molded wheels and pinions. Smooth, quiet operation.

APPLICATIONS

Precision display for commercial instruments: blood analyzers, X-Y indicators, drafting tables, machine tool positioning, clockwise-counterclockwise indicators, and laser beam transits.

MODELS

Series 1854—Direct Drive, adds 10 counts per revolution. Nonreset. Right wheels of each section are directly geared to shaft. Counter reverses at any point. As one section adds the other subtracts. As one section subtracts through zero reading, the shutter transfers to cover subtracting section and exposes the other which then adds. Both sections are exposed at zero reading. The shaft rotations shown on the external drawing designate the rotation for the top bank to add. Wheel rotation is opposite to shaft rotation. Nonstock, make item.

SPECIFICATIONS

Speed: 1500 rpm maximum continuous, 2500 rpm maximum intermittent

Torque: Maximum static torque when all wheel-transfer components are engaged: 1.25 oz-in. at room temperature, 2.75 oz-in. at 65° and +221°F

Number of Figures: 2 to 5 per section

Size of Figures: 0.187 in. high, 0.140 in. wide with 0.035 in. stroke. An 0.025 in. stroke is available

Color of Figures: White on black. Special colors are available, including black on white; yellow, red, or green on black

Shutter Markings: Plus and minus, + and -, up and down, open and closed, left and right, etc. are available on standard models

*Trademark of Veeder-Root

Character Configuration: 0 to 9 or 0 to 9 with 50 graduations on right wheel is standard. Graduations, cursor lines adjacent to right wheels and special configurations are optional

Graduations: Ten graduations 0.093 in. long with 0.015 in. stroke or forty graduations 0.062 in. long with 0.015 in. stroke

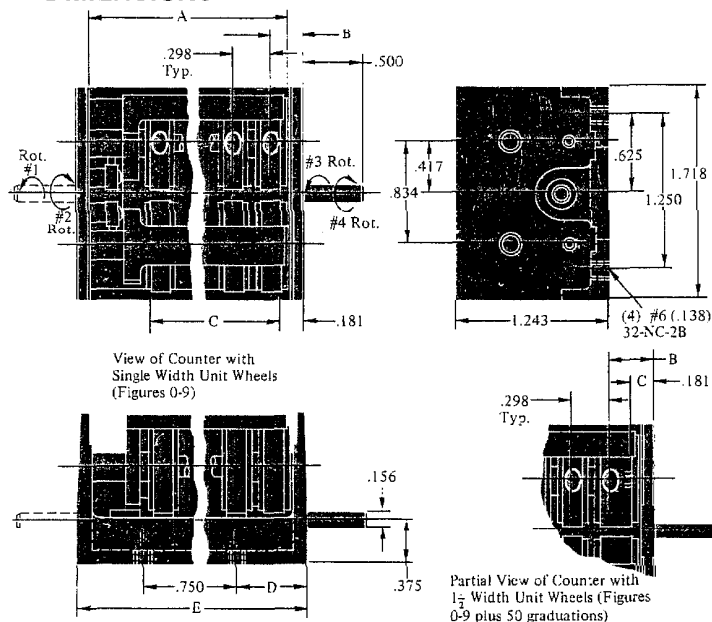
Lubrication: Not required

Mounting: Base. Special and back of panel mounting optional

Construction: Frame and shutter: aluminum. Shafts: stainless steel. Right wheels: nylon, others acetal resin. Pinions: special thermoplastic. Bearings: porous bronze

Net Weight: 3 oz

DIMENSIONS



COUNTER WITH SINGLE WIDTH UNIT WHEELS

No. of Wheels Per Section	A	B	C	D	E
3	1.345	.258	.756	.406	1.557
4	1.642	.258	1.054	.559	1.854
5	1.951	.258	1.362	.710	2.163

COUNTER WITH 1 1/2 WIDTH UNIT WHEELS

No. of Wheels Per Section	A	B	C	D	E
3	1.345	.352	.850	.406	1.557
4	1.642	.352	1.148	.559	1.854
5	1.951	.352	1.456	.710	2.163

Veeder-Root Sales Offices & Plants

United States and Canada

California

- * † 1049 Grand Central Avenue
Glendale 91201
Tel: (213) 245-8421
(213) 241-8026
Telex 67-4392
1499 Bayshore Blvd.
Burlingame 94010
Tel: (415) 697-6830

Connecticut

- * † 70 Sargeant Street
Hartford 06102
Tel: (203) 527-7201
Telex 9-9219

Georgia

47 Westwood Circle
Rome 30161
Tel: (404) 235-0756

Illinois

- 455 State Street
Des Plaines 60016
Tel: (312) 824-0188
Telex 72-6327

Maryland

Baltimore
Tel: (301) 296-2177

Michigan

19818 Mack Avenue
Detroit 48236
Tel: (313) 886-4485

Minnesota

2401 West 66th Street
Minneapolis 55423
Tel: (612) 866-4811
(612) 866 5805
Telex 029-690

New Jersey

- 1250 East Ridgewood Ave.
Ridgewood, N.J. 07450
Tel: (201) 445-2401
Telex 13-3495

New York

- 1250 East Ridgewood Ave.
Ridgewood, N.J. 07450
Tel: (201) 445-2401
Telex 13-3495
3100 Monroe Ave.
Rochester 14618
Tel: (716) 244-0500

North Carolina

- † 2100 W. Broad, Rt. 87
Elizabethtown 28337
Tel: (919) 862-2511
Charlotte
Tel: (704) 364-3653

Ohio

5725 Dragon Way
Cincinnati 45227
Tel: (513) 271-6200
12417 Cedar Road
Cleveland 44106
Tel: (216) 462-2634

Pennsylvania

P.O. Box 560
Willow Grove 19090
Tel: (215) 887-0708

South Carolina

- * † P.O. Box 1845, 29602
I-385 at Roper Mountain Rd.
Greenville 29607
Tel: (803) 288-2133
Telex 57-0422

Texas

Dallas
Tel: (214) 252-3360

Canada

- * 26 Fieldway Road
Toronto, Ont., M8Z 3L2
Tel: (416) 239-3094
Telex 02-2783
1495 McDonald Street
Montreal, Que., H4L 2A8
Tel: (514) 747-1213

- Regional Office
- * Service and Repair
- † Manufacturing

The Total Capability Company

VEEDER-ROOT

Digital Systems Division

Hartford, Conn. 06102 - (203) 527-7201 - A VEEDER INDUSTRIES COMPANY

