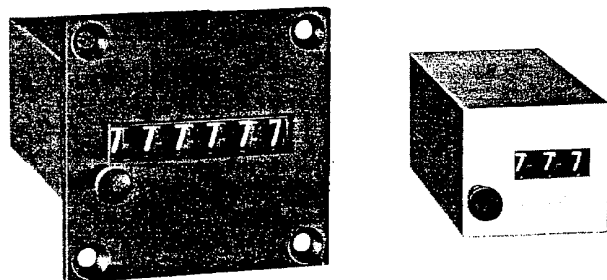


MINIATURE ELECTRIC COUNTER SERIES 1770



DESCRIPTION

Compact, reliable electric totalizer. Low power requirements. Modern appearance. Tamper resistant case. Thermostable wheels, pinions, and verge. Choice of figure capacities. With or without reset. Rear or panel mount. High count speed, long life. Magnifying crystal on panel mount counters.

APPLICATIONS

Compact counter for limited space installations. Office, business machines. Data processing and handling equipment. Communication and control instruments. Coin operated machines. Bowling equipment.

MODELS

Series 1770—dc voltages, reset and nonreset.

STOCK ITEMS

Form Number

Rear mount, reset, 4 figures, 24 v-dc	177004-005—24 v-dc
Panel mount (black), reset, 4 figures, 24 v-dc	177004-146—24 v-dc
110 v-dc	177004-150—110 v-dc

SPECIFICATIONS

Speed: 1000 cpm

Minimum Count Pulse Timing: 30 ms on-time, 30 ms off-time. Counter designed for continuous duty operation

Voltage: 24, 110 v-dc. Allowable variation is $\pm 10\%$ or 10 volts, whichever is limiting. Special dc voltages optional. Can be externally rectified for ac operation

Power Consumption: 2.5 watts nominal standard for all units. 1.5 watts nominal with speeds to 600 cpm available as an option in narrow frame only

Number of Figures: 3 and 4 figure reset or 3, 4, and 5 figure nonreset in narrow frame. 5 and 6 figure reset or 6 and 7 figure nonreset in wide frame

Size of Figures: 0.160 in. high by 0.080 in. wide

Color of Figures: White on black. Specials optional

Reset: Manual push button

Mounting: Rear or panel

Connections: Leads from side on rear mount and from rear on panel mount, or combination taper pin and solder terminals at rear. Special connections optional

Construction: Wheels, pinions, verge: acetal resin. Shafts: stainless steel. Crystal: Lucite. Case: aluminum. Panel: Zamak. Bobbin: nylon

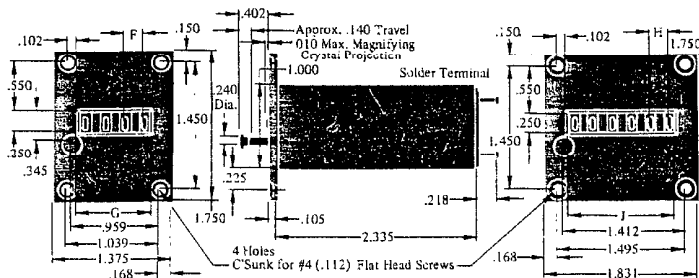
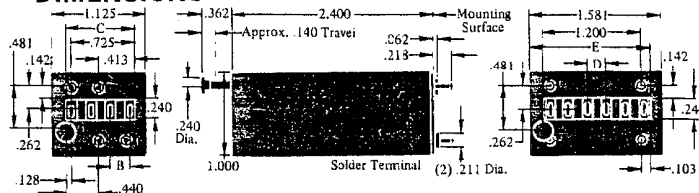
Lubrication: Not required

Net Weight: 3.5 to 5 oz

OPTIONS

Special wheel colors, character configurations. Special voltages. Rectifier for ac operation. Magnifying crystal optional. For rear mounting. Combination taper pin and solder terminal connections. Special leads.

DIMENSIONS



Number of Figures	B	C	F	G
3 Reset and Nonreset	.270	.580	.220	.590
4 Reset and Nonreset	.220	.797	.220	.807
5 Nonreset	.185	.878	.185	.888

Number of Figures	D	E	H	J
5 Reset	.220	1.020	.220	1.030
6 Reset and Nonreset	.220	1.250	.220	1.260
7 Nonreset	.185	1.250	.185	1.260

Veeder-Root Sales Offices

United States and Canada

California

- 1049 Grand Central Avenue*
Glendale 91201
Tel: (213) 245-8421
(213) 241-8026
Telex 67-4392
1499 Bayshore Blvd.
Burlingame 94010
Tel: (415) 697-6830

Connecticut

- 70 Sargeant Street*
Hartford 06102
Tel: (203) 527-7201
Telex 9-9219

Georgia

47 Westwood Circle
Rome 30161
Tel: (404) 235-0756

Illinois

- 455 State Street
Des Plaines 60016
Tel: (312) 824-0188
Telex 72-6327

Maryland

Baltimore
Tel: (301) 296-2177

Michigan

19818 Mack Avenue
Detroit 48236
Tel: (313) 886-4485

Minnesota

2401 West 66th Street
Minneapolis 55423
Tel: (612) 866-4811
(612) 866-5805
Telex 029-690

New Jersey

- 1250 East Ridgewood Ave.
Ridgewood 07450
Tel: (201) 445-2401
Telex 13-3495

New York

- 1250 East Ridgewood Ave.
Ridgewood, N.J. 07450
Tel: (201) 445-2401
Telex 13-3495
3100 Monroe Ave.
Rochester 14618
Tel: (716) 244-0500

North Carolina**

2100 W. Broad, Rt. 87
Elizabethtown 28337
Tel: (919) 862-2511
Charlotte
Tel: (704) 364-3653

Ohio

5725 Dragon Way
Cincinnati 45227
Tel: (513) 271-6200

12417 Cedar Road
Cleveland 44106
Tel: (216) 462-2634

Pennsylvania

P.O. Box 560
Willow Grove 19090
Tel: (215) 887-0708

South Carolina

- P.O. Box 1845, 29602*
I-385 at Roper Mountain Rd.
Greenville 29607
Tel: (803) 288-2133
Telex 57-0422

Texas

4223 Richmond Ave.
Suite 218, Tracy Bldg.
Houston 77027
Tel: (713) 623-4806
Dallas
Tel: (214) 252-3360

Canada

- 26 Fieldway Road
Toronto M8Z 3L2
Tel: (416) 239-3094
Telex 02-2783
1495 McDonald Street
Suite 2
St. Laurent 379
Tel: (514) 747-1213

- Regional Office
- * Service and Repair
- ** Manufacturing Only

The Total Capability Company

VEEDER-ROOT

Digital Systems Division

Hartford, Conn. 06102 • (203) 527-7201 • A VEEDER INDUSTRIES COMPANY



VEEDER-ROOT WORLD WIDE: ARGENTINA: Buenos Aires • AUSTRALIA: Melbourne • BRAZIL: Sao Paulo
CANADA: Toronto • ENGLAND: Croydon, Surrey • SCOTLAND: Dundee • WEST GERMANY: Neuhausen/Fiuder