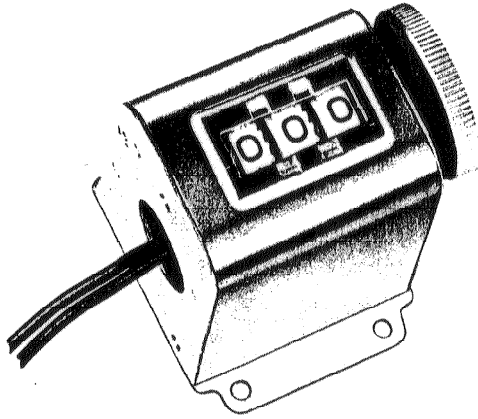




## SMALL RESET ELECTRIC COUNTER SERIES 1507



### DESCRIPTION

Electric totalizer. Small, compact, economical. Rotary reset, 3 to 5 figures. Base or panel mounting. UL recognizes basic model. Numerous standard voltages. Heavy duty Zamak frame. Acetal resin wheels, pinions. Aluminum cover. Designed for continuous duty.

### APPLICATIONS

Economy totalizing. Vending and amusement machines, test and X-ray devices. Dry cleaning and film processing equipment, office machines and textile machinery.

### MODELS

Series 1507—Knob reset.

### STOCK ITEMS

### Form Number

STOCK ITEMS	Form Number
Base mount, 115 v-ac, 3 figures, UL	B-150703-010—115 v-ac
115 v-ac, 4 figures, UL	I-150704-045—115 v-ac
24 v-dc, 4 figures	K-150704-055—24 v-dc
Panel mount, 115 v-ac, 3 figures	U-150703-105—115 v-ac
24 v-ac, 4 figures	R-150704-090—24 v-ac
115 v-ac, 4 figures	O-150704-075—115 v-ac

### SPECIFICATIONS

**Speed:** 700 cpm for dc counters, 600 cpm for ac counters

**Minimum Count Pulse Timing:** 42.5 ms on-time, 42.5 ms off-time for dc counters; 50 ms on-time, 50 ms off-time for ac counters. Counter designed for continuous duty operation

**Voltage:** 24, 115 v-ac 60 cycles; 115 v-ac 50 cycles; 24 v-dc. Allowable variation is  $\pm 10\%$  or 10 volts, whichever is limiting. Special voltages optional

**Power Consumption:** 5 watts nominal

**Number of Figures:** 3, 4, or 5

**Size of Figures:** 0.188 in. high by 0.156 in. wide

**Color of Figures:** Black on white. Specials optional

**Reset:** Manual rotary

**Mounting:** Base or panel

**Connections:** Leads from side

**Construction:** Frame: Zamak. Cover: aluminum. Wheels, pinions: acetal resin

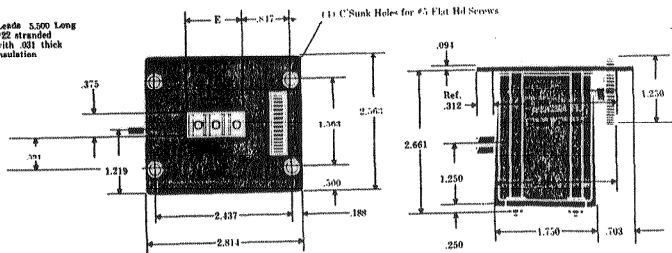
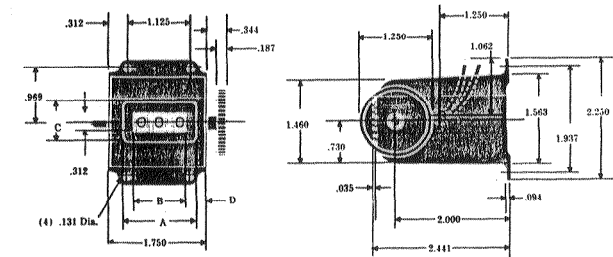
**Lubrication:** Not required

**Net Weight:** 12 oz

### OPTIONS

Voltages. Lead length. Figure colors. Base or panel mounting. Number of figures. UL recognized.

### DIMENSIONS



No. of Fig.	A	B	C	D	E
3	1.200	.937	.740	.354	1.000
4	1.469	1.240	.700	.363	1.326

Totalizing