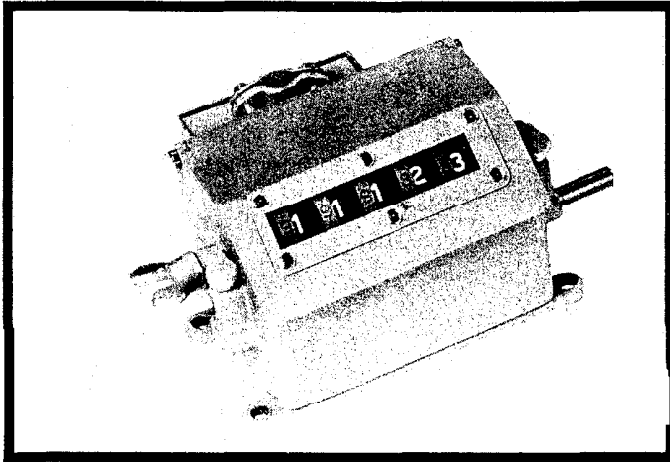


SERIES 1239, 1378

High Speed Predetermining Counter



Features

- Adds to preset number.
- Electrical predetermining control.
- Economical, automation proven performance.
- Continuous display of accumulated total.
- Flexible and simple to use.
- Choice of resets, geared or ratchet drive.
- Use with one foot measuring wheels, universal or forked coupling, or plain shaft.

Applications

- Elementary control for armature and coil winding machine.
- Coin operated and ticket marking equipment.
- Knitting machines and textile preparatory equipment.
- Stop-motion control for a clutch or brake.
- **Series 1239:** Geared Drive, adds one count for a specified number of drive shaft revolutions in specified rotation. Will not subtract past zero. Electrical switch.
- **Series 1378:** Ratchet Drive, adds one count for each drive shaft actuation through arc of 21° maximum in specified direction. Electrical switch.

Form Numbers

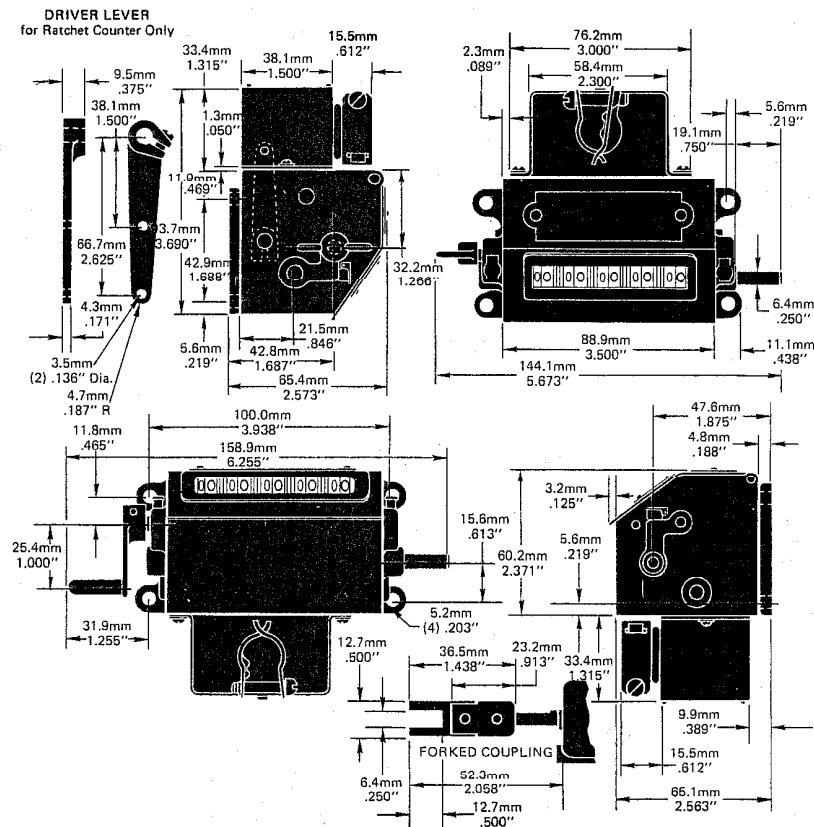
	1	2	3	4
STOCK ITEMS				
Geared drive, 1:1 ratio, 5 figures, SPDT switch, wing nut reset	123915-681	123925-686	123935-689	123945-696
NON-STOCK ITEMS				
Crank handle reset	123915-846	123925-846	123935-846	123945-846
Ratchet drive, 5 figures, SPDT switch, wing nut reset	137815-006	137825-006	137835-006	137845-006

SERIES 1239, 1378 — High Speed Predetermining Counter

Specifications

Count Speed	Geared Drive: 2500 rpm or 5000 cpm whichever is limiting. Ratchet Drive: 500 cpm.
Torque	Maximum static 4 oz-in. for 1:1 gearing.
Gearing	1:1 is standard. Other ratios are optional.
Contact Capacity	Manufacturer's switch rating: 1/2 hp at 230 VAC; 20 amp at 115 VAC; 15 amp at 230 VAC; 3 amp at 460 VAC; 0.4 amp at 115 VDC; 0.2 amp at 230 VDC. SPDT switch.
Number of Figures	5.
Size of Figures	Counting: 0.206" high by 0.150" wide. Predetermining: 0.165" high by 0.120" wide.
Color of Figures	Counting: white on black. Predetermining: gray with molded recessed figures.
Character Configuration	0 to 9.
Reset	Manual. *Resets to preset number. Standard models: wing nut or crank handle.
Lubrication	Periodic.
Construction	Case: Zamak. Drive shaft: chrome plated steel. Cover: steel. Gears: brass and chrome plated steel. Wheels, pinions: acetal resin.
Net Weight	2 lbs., 9 oz.
Options	Crank, clock key, or 1-1/4" knob reset. Back mounting with bottom switch. Double shaft extension, friction wheel drive. Special levers, gear ratios. Universal or fork coupling. Four-figure capacity. Subtractive versions. Positive reset, lintproof construction.

Dimensions



VEEDER-ROOT 
Digital Products

125 Powder Forest Drive, Post Office Box 2003, Simsbury, CT 06070-2003 TEL: (203) 651-2700, FAX: (203) 651-2750

AUSTRALIA: Cheltenham, Victoria • BRAZIL: Sao Paulo • CANADA: Etobicoke • FRANCE: Rungis • SCOTLAND: Dundee • WEST GERMANY: Neuhausen/Filder