

DC CONTROL - 7400

General Information

DC Contactors in sizes 1 Thru 5 are for use as main line, reversing or accelerating contactors in DC motor starters and controllers. Other applications include switching resistive heating and battery loads.

Description

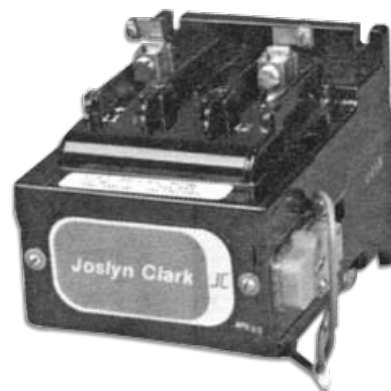
All DC Contactors are solenoid operated for fast, constant, long-life performance. Generous size double break silver cadmium oxide contacts in combination with built-in permanent magnet blowouts assure long contact life and positive circuit interruption. Terminal location makes the contactors ideal for straight-through wiring and for wire channel layouts. Accessible up-front pressure-type terminals are furnished as standard.

Auxiliary Contacts

All contactors can be furnished with N.O., N.C. or N.O. & N.C. auxiliary contact blocks. Each contactor can be supplied with a maximum of four auxiliary contact blocks. Kits are also available for field installation.

Operating Coils

Standard coils for DC operation are molded and equipped with pressure type terminals. The DC coils are furnished with late break auxiliary and economizing resistors as standard. AC coils can be furnished for applications requiring an AC control circuit.



250 Volts DC Max					
Size	8-Hour Rating in Amps.		Open Type DC Coil	Open Type DC Coil	Open Type DC Coil
	Open	Closed	1 Pole N.O. Catalog No. ²	2 Pole N.O. Catalog No. ²	2 Pole N.O. & 1 Pole N.O. Catalog No. ²
1	25	22.5	74014010-*	7401-1020-*	7401-3050-*
2	50	45	74024010-*	7402-1020-*	7402-3050-*
3	100	90	-	7403-1020-*	7403-3050-*
4	150	135	-	7404-1020-*	7404-3050-*
5	300	270	7405-4010-*	7405-1020-*	7405-3050-*
Size	Open	Closed	1 Pole N.O. - AC Coil	2 Pole N.O. - AC Coil	2 Pole N.O. - 1 N.C. - AC Coil
1	25	22.5	7441-4010-*	7441-1020-*	7441-3050-*
2	50	45	7442-4010-*	7442-1020-*	7442-3050-*
3	100	90	-	7443-1020-*	7443-3050-*
4	150	135	-	7444-1020-*	7444-3050-*
5	300	270	7445-4010-*	7445-1020-*	7445-3050-*

Auxiliary Contact Ratings				
DC Volts	Amperes Normal	AC Volts	Amperes	
			Normal	Inrush
125	1.1	120	6.0	60
280	0.55	240	3.0	30
-	-	480	1.5	15
-	-	600	1.2	12

Notes:

1. On Sizes 3 & 4 only for single pole applications use two poles in series and for two pole applications use one pole in each line.
2. Contactor furnished without auxiliary contact. See Modifications & Accessories.

Ordering Information

Use complete catalog number.
Replace the (*) with the suffix from the coil table.

Coil Table

AC 60Hz/ Voltage	Suffix	DC Voltage	Suffix
120	11	24	82
208/240	21	48	32
480	41	120	12
600	51	240	22

DC CONTROL - 7400

Accessories & Dimensions

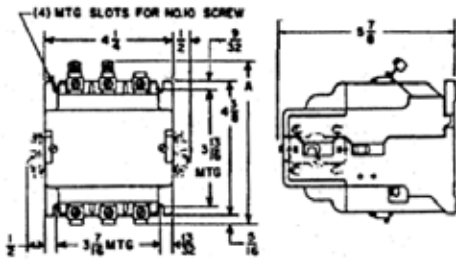
DC Coils 3 Discount Schedule JC 27		
NEMA Size	Voltage	Kit No. ¹
1&2	120	5999A-2931
	240	5999A-2932
3&4	120	5999A-2941
	240	5999A-2942

NEMA Size	50/60 Hz Volts	Kit No.
1&2	120	5ML21
	240	5ML22
	480	5ML23
	600	5ML24
3&4	120	5ML41
	240	5ML42
	480	5ML43
	600	5ML44
5	120	5ML51
	240	5ML52
	480	5ML53
	600	5ML54

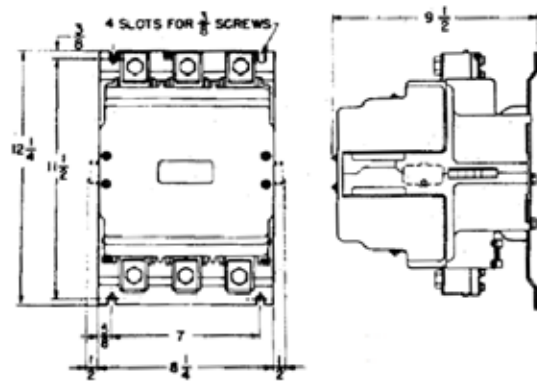
Modification & Accessories		
Description	Discounted Schedule JC 20 Kit No.	
Kits for Field Installation:		
N.O. Aux.	5M63	
N.C. Aux.	5M64	
N.O. & N.C. Aux.	5M65	
Contact Kits - (For 1-Pole)		Discounted Schedule JC 27
Size	N.O. Contacts Kit No. ²	N.O. Contacts Kit No. ²
1	5M55	5M57
2	5M52	5M58
3	5M53	5M49
4	5M54	5M49
5	5999-0045	5999-2461

1. Consult factory for low-level signal switching options.

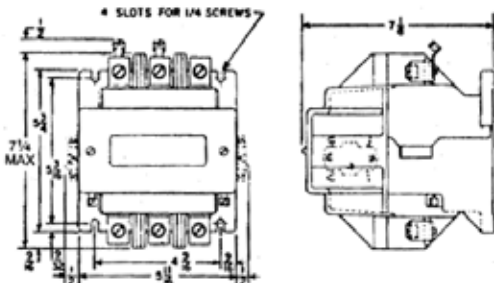
Dimensions - Approximate (Contactor base must be mounted vertically)



25 and 50 amp. contactor
Dimension A: 5 1/8" for size 1
5 3/8" for size 2



300 amp contactor
Size 5



100 and 150 amp. contactor
Size 3 & 4

Notes:

1. Coil Kits include economizing resistor and normally closed late break auxiliary.
2. Kits include stationary contacts, movable contacts and contact spring.
3. For special coils refer to factory.